

Registration form

Name:

Address:

..... Pcode:

Tel: Mobile:

Email:

Date of Birth: Time of Birth:.....

Location of Birth:

Full Name at Birth:

.....

Sara can provide a Rectification Service to determine an accurate time of birth before the course begins at a cost of \$90, if this is unknown. Please ask for a Rectification Questionnaire at time of enrolment should you require this to be done

Fee Structure

Total workshop cost \$150

Enrolment Fee of \$50 with the remaining \$100 payable on the day

Payment by Cash or Credit Card

or

Direct Deposit to Life Spirit Connections

BSB: 033 179 Account: 214316

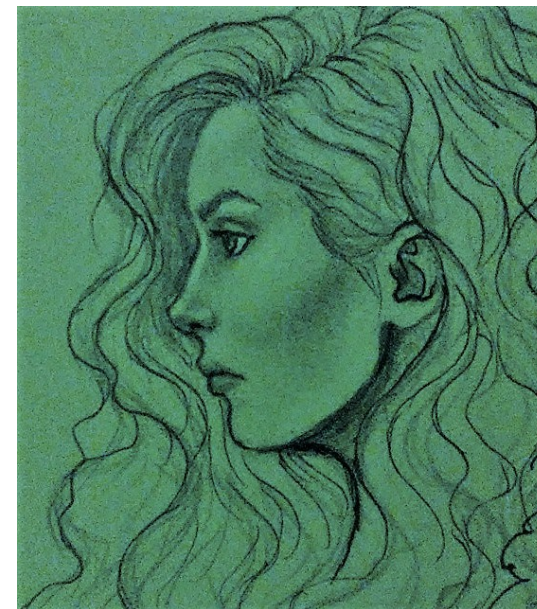
Sara Gilbert

Sara Gilbert has consolidated a childhood love of stories from Greek and Roman mythology, into astrological research and practice with intuitive asteroid archetypes that associate back to myth from many cultures. A psychological astrologer with an evolutionary focus, Sara consults and teaches through Life Spirit Connections, near Frankston, in Victoria. She holds the FAA (Federation of Australian Astrologers) Diploma, APA (Association of Professional Astrologers) membership and Level Two Apprentice status with Steven Forrest in Evolutionary Astrology, which focuses on the Moon's Nodes and the influence of Past Lives in determining our Purpose in this incarnation. Her astrology courses focus on the FAA syllabus.



Sara's special gift is helping people decode the patterns in their lives, so they feel comfortable in their own skin. She is able to draw on wisdom from multi-faceted esoteric systems: astrology, tarot, tree of life, numerology and palmistry/hand analysis which enables a richer understanding, as each tool reinforces life design through a slightly different lens. Sara has run workshops and presented for astrology associations around Australia, including Victoria, Newcastle, Tasmania, South Australia, Brisbane and the Gold Coast. She has developed a strong following for her daily astrology posts on facebook and the CIA website, also having articles published by the TGA Magician, the VAA Horizons and the FAA Journal. At present Sara is concentrating on developing her own mythical oracle deck and writing a book based on her research into mythological asteroid archetypes and hand analysis markings.

The Goddess Within



Presented by
Sara Gilbert

When Scheduled

10.00 am—5.00 pm



11 Clover Place, Carrum Downs 3201

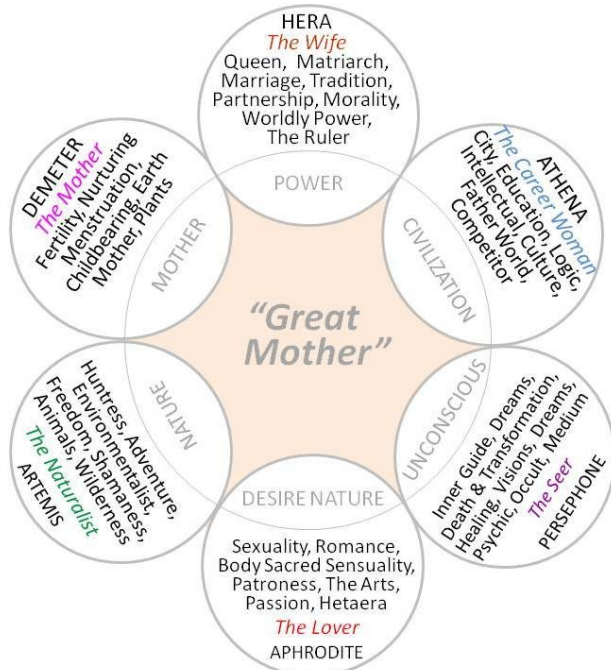
0412 235 935

sara@lifespirtconnections.com.au

www.lifespirtconnections.com.au

Workshop outline

In 1989 Gestalt and Jungian psychologists Jennifer Barker Woolger and Roger J Woolger published a seminal book, based on their work with workshops on goddess psychology, "The Goddess Within". It explored the archetypes of six Greek Goddesses in the lives of modern women. These archetypes validate the feminine as it truly presents itself from your soul, reflected by behavior patterns, not as today's society dictates that women should be.



The goddess archetypes validate women to be as they were meant to be, providing a source of freedom and understanding that you can tap into, regardless of what life path you have chosen to take. This will remove unfair expectations that your upbringing has placed on you and help you navigate the turning points in your life, by understanding which goddess type is operating most strongly at the time. This approach encourages you to bring more harmony between the various goddess qualities, as having one goddess dominate the personality denies the richness that can come from having them all in balance.

This workshop builds on the Woolger's psychological behaviour patterning approach from "The Goddess Within", by blending in the potential you brought into this lifetime, through your natal astrology chart as a blueprint. Sara Gilbert's experience working with the goddess archetypes, through the asteroids and other planetary bodies given their name, coupled with her lifelong passion for mythology, enables her to bring additional depth to the material.

The Greek Gods and Goddesses were secretized by the Romans who latinized their names in the process. The tradition in astrology has been to give the planets and first asteroids the Roman name, hence Aphrodite has the same characteristics as the archetype for Venus. Pallas Athena, the second asteroid to be discovered was the first exception to this. Sara has identified three polarities within the six goddess archetypes in the same manner as we see with opposite signs (like Aries to Libra) and opposite houses (like 1st house of self to 7th house of other or relationship):

Hera (Juno) — Aphrodite (Venus)

Athena (Minerva) — Artemis (Diana)

Demeter (Ceres) — Persephone (Prosperina)

This relates archetypically to:

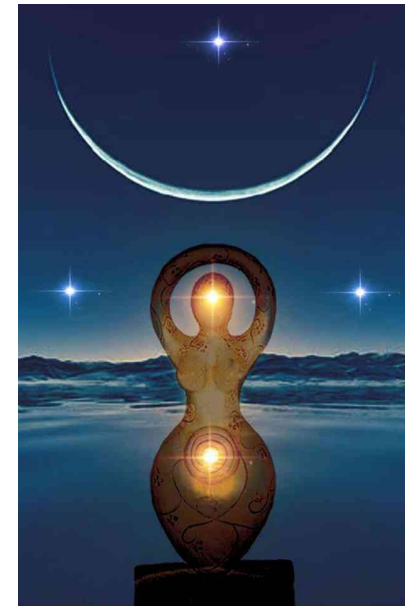
The Wife — The Other Woman

Corporate Career — Freedom & Nature

The Mother — The Inner World

During the workshop participants assess their own behavioural patterns using the questionnaire developed by the Woolgers. This provides a clear picture of the relative dominance of the six goddess archetypes in their lives. This quite often resonates at powerful level and brings a clear recognition of a major pattern that has influenced your life, especially when one or more of the polarities described above is very heavily biased to one end or the other. Deeper discussion of both the positive and more challenging aspects of each archetype pattern and sharing experiences with the other participants will enable you to understand why you have lived the life you have so far, as well as offering potential for transformative growth in the future.

Additional information gained from the position of the relevant planetary bodies in your natal chart and the connections and patterns that they with different areas of your life can help to present you with a more complete picture. Sara is trained in evolutionary astrology, working with the Lunar Nodes to gain information about past life emotional patterning and what you have come here to heal as your life purpose. This can be applied to help you further understand the balance of the different goddess archetypes in your personality and determine what changes may be beneficial to meet your purpose.



What this workshop will help you identify:

- Why you are the woman that you are
- Repetitive patterns that have occurred throughout your lifetime
- The breakdown of the six goddess archetypes in your make up
- Reasons why you are drawn to or repelled by the mythology of different Greek Goddesses
- Whether potential courses of action are required to bring your goddess archetypes more into balance